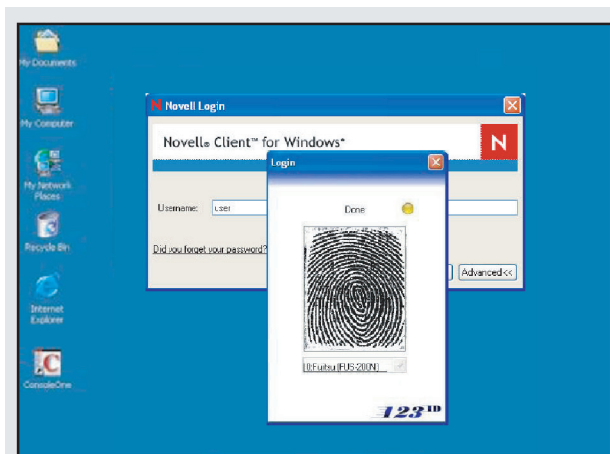


Fujitsu Biometric Identity Management Login



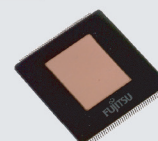
• eDirectory Login Partner



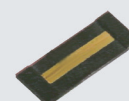
• Software Supplier



• Fujitsu Fingerprint Sensor ICs



MBF200



MBF320

Description

Fujitsu offers biometric identity and security management login kits. The kits seamlessly integrate with Novell® network secure login systems via Novell Modular Authentication Service (NMAS™). The Fujitsu eDirectory authentication replaces the easily compromised password method. Fujitsu has combined its MBF200 touch sensor and MBF320 Sweep Sensor® technology with 123ID's Universal Matching System (UMS) and NMAS

feature enhancements to deliver a much-needed easy-to-use biometric enterprise solution for Novell eDirectory. Client and server kits include administrator and user NMAS software, documentation, USB fingerprint modules, drivers and licensing scalable to any enterprise solution and supported on Linux, Windows and NetWare eDirectory servers and client PCs.

Features and Benefits

Ease of Mass Enrollment

Post-Login method allows biometric Client self enrollment. The NDS Password with limited privileges can then be deployed to users allowing self enrollment.

Interoperability

Platform Interoperability: Client and server kits provide cross-platform support in Linux, Windows and Netware.

Product Interoperability: Provides seamless and complementary coexistence with other NMAS methods such as Novell SecureLogin™ using the same eDirectory fingerprint repository as Fujitsu Identity Management Login.

Sensor Interoperability: Any other sensor compatible with 123ID could be enlisted while maintaining NIST-FIPS-201 compliant templates.

Remote Login

Disconnect mode allows off network login and roaming features synchronizing authentication methods to eDirectory resources when disconnected from the network.

Identity management

Client and Server NMAS kits are scalable solutions for identity management solutions. Scalable user licenses and biometric authentication modes provide one-to-one and one-to-many (fingerprint only) login.

NMAS CD Kits

Fujitsu NMAS Server Software

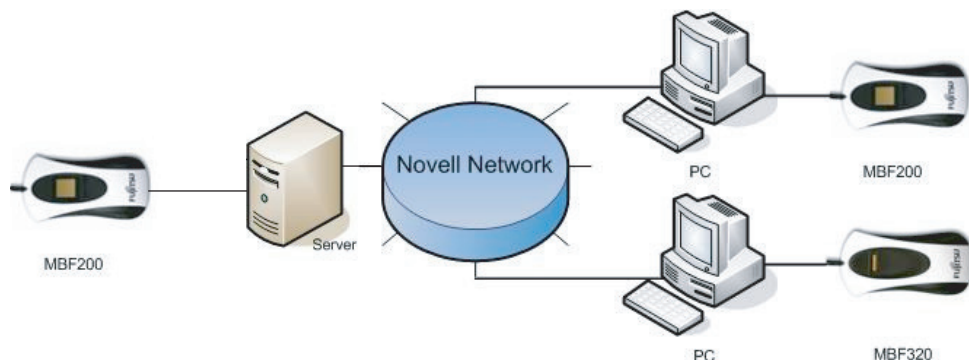
- Multi-platform (Linux, Windows, NetWare) installable NMAS Enterprise Server CD for Novell eDirectory LMO (Login Method Object). Includes Administrator + Client software for Login (1:1) or Identify (1:Many) management modes.
- 5 User Licenses
- One Fujitsu MBF200 or MBF320 USB Module

Fujitsu NMAS Client Software

- Multi-platform (Linux, Windows) installable NMAS Client CD for Novell eDirectory LMO (Login Method Object). Includes Client software for Login (1:1) or Identity (1:Many) management modes.
- 1 User License
- One Fujitsu MBF200 or MBF320 USB Module

Fujitsu Biometric Identity Management Login

► Biometric Topology



► System Requirements

Server System Requirements

- SUSE Linux Enterprise v10
- Novell eDirectory 8.8
- NetWare 6.5 SP3
- ConsoleOne v1.3.6
- Windows 2003, XP SP2, or 2000 SP4

Client System Requirements

- SUSE Linux v10.2
- Novell Client for Linux, v1.0
- Windows XP SP2, 2000 SP4
- Novell Client for Windows v4.91 SP4
- USB Port

► Part Numbers

Part Number	Matching Engine	Description
NMAS-UMS-2210	1-1 (Login)	eDirectory NMAS Server SW Touch Kit Administrator + Client + 5 User Licenses + MBF200 USB Module
NMAS-UMS-4210	1-N (Identify)	
NMAS-UMS-2220	1-1	eDirectory NMAS Server SW Swipe Kit Administrator + Client + 5 User Licenses + MBF320 USB Module
NMAS-UMS-4220	1-N	
NMAS-UMS-2300	1-1	eDirectory NMAS Client SW Touch Kit Client + 1 User License + MBF200 USB Module
NMAS-UMS-4300	1-N	
NMAS-UMS-2310	1-1	eDirectory NMAS Client Swipe Kit Client + 1 User License + MBF320 USB Module
NMAS-UMS-4310	1-N	
NMAS-UMS-2400	1-1	eDirectory NMAS Client License Upgrade User License(s)
NMAS-UMS-4400	1-N	
NMAS-UMS-2201	n/a	123ID Biometric Drivers, Multi-sensor support

FUJITSU MICROELECTRONICS AMERICA, INC.

Corporate Headquarters

1250 E. Arques Avenue, M/S 333, Sunnyvale, CA 94085-5401

E-mail: inquiry@fma.fujitsu.com

Web Site: <http://us.fujitsu.com/micro/edir>

Sales Contact: Canada 1-800-668-3450 U.S. 1-800-456-5066

© 2008 Fujitsu Microelectronics America, Inc.

All company and product names are trademarks or registered trademarks of their respective owners.

Printed in the U.S.A. BIO-FS-21290-3/2008