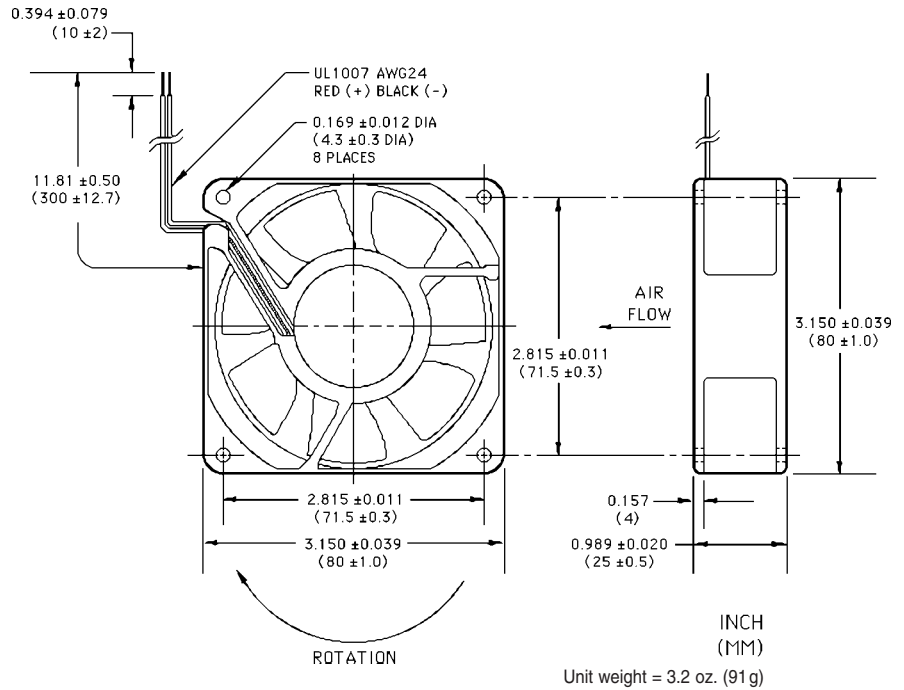


TA300DC



- ▶ 12V and 24V Models
- ▶ Polarity Protected
- ▶ Permanently Lubricated Ball Bearings or Long-Life Sleeve Bearing Designs
- ▶ Alarm/Tachometer/Thermal Control Options Available on All Models
- ▶ UL Recognized, CSA Certified
- ▶ Sound-Absorbing Thermoplastic Frame and Impeller Rated UL94V-0
- ▶ Color-Coded 11.8 in. (300 mm) Leads

Electrical and Mechanical Characteristics

Model	Air Flow (CFM)	Operating Voltage		Current (mA)	Power (W)	Sound Level			Bearing	Operating Temp.		L10 Life † (hours)
		Nom. (V)	Range (V)			Pressure (dBA)	NPEL (Bels)	Fan Speed (rpm)		Min. (°C)	Max. (°C)	
M33414	25	12	10.2-13.8	110	1.32	22.5	3.8	2,050	Ball	-10	+70	120,900
E34392	25	12	10.2-13.8	110	1.32	19.8	3.7	2,050	Sleeve	-10	+70	125,080
M33415	25	24	20.4-27.6	90	2.16	22.5	3.8	2,050	Ball	-10	+70	120,900
E34393	25	24	20.4-27.6	90	2.16	19.8	3.7	2,050	Sleeve	-10	+70	125,080
M33412	30	12	10.2-13.8	150	1.80	24.4	4.2	2,400	Ball	-10	+70	114,200
E34394	30	12	10.2-13.8	150	1.80	25.8	4.0	2,400	Sleeve	-10	+70	102,650
M33413	30	24	20.4-27.6	100	2.40	24.4	4.2	2,400	Ball	-10	+70	114,200
E34395	30	24	20.4-27.6	100	2.40	25.8	4.0	2,400	Sleeve	-10	+70	102,650
M33409	35	12	10.2-13.8	210	2.52	31.7	4.5	2,900	Ball	-10	+70	106,000
E34396	35	12	10.2-13.8	210	2.52	32.0	4.7	2,900	Sleeve	-10	+70	84,030
M33411	35	24	20.4-27.6	130	3.12	31.7	4.5	2,900	Ball	-10	+70	106,000
E34397	35	24	20.4-27.6	130	3.12	32.0	4.7	2,900	Sleeve	-10	+70	84,030
M33406	43	12	10.2-13.8	290	3.48	35.8	5.0	3,400	Ball	-10	+70	99,100
E34398	43	12	10.2-13.8	290	3.48	34.2	5.1	3,400	Sleeve	-10	+70	61,250
M33407	43	24	20.4-27.6	180	4.32	35.8	5.0	3,400	Ball	-10	+70	99,100
E34399	43	24	20.4-27.6	180	4.32	34.2	5.1	3,400	Sleeve	-10	+70	61,250

Note: Air flow, current, power, speed and sound level ratings are at nominal voltage against zero static pressure. NPEL = Noise Power Emission Level. The first character of the model number denotes housing material and flange configuration. (M = advanced thermoplastic housing with open flange.) The series is also available as 'C' models (thermoplastic housing, closed flange). For power termination and signal options, designated by a suffix added to the model number, see the How to Order section of this catalog.

† L10 bearing life expectancy at T_A = +40°C, nominal voltage. Failure criteria include a 15% reduction in fan speed or a 5 dBA increase in sound pressure.



Nidec

152 Will Drive, Canton, MA USA 02021 · Phone 781-828-6216 · Fax 781-830-1155

Email fans@nidec.com · http://www.nidec.com

TA300DC

Air Performance Characteristics

